



gifted

Busy mother and tireless volunteer leads the 19th annual Holiday House.

W

HEN AMBER BARHAM TOLD US THAT SHE "HIT THE GROUND RUNNING IN THE JUNIOR LEAGUE OF LITTLE ROCK," SHE WASN'T JOKING. THE NEW BRAUNFELS, TEXAS, NATIVE (AND RUNNER) MOVED HERE IN 2004 FROM LUBBOCK, TEXAS, WITH HER HUSBAND, BRETT, AND IMMEDIATELY GOT INVOLVED IN THE JLLR.

"I started in the Junior League of Lubbock and got about a month into it, and we moved to Little Rock. So I transferred right in to the JLLR," she said. "I did my first community ties shift before the moving truck even arrived."

Barham credits several JLLR members for her easy transition. "Cherry Landfair, Susan Reynolds, and Jennifer McCarty took me under their wings and helped me get acclimated and involved from the get-go."

Now, five years later, she's leading the fundraising festivities as the chair of Holiday House 2009, a role that comes gifted with plenty of responsibilities.

"I oversee 11 subcommittees and try to promote a team atmosphere, maintain a budget, oversee all publicity, serve as the liaison between the subcommittee chairs and the public and sponsors, plan and envision special events, think outside the box on how to promote the activities and increase attendance, and try to keep all of this on a strict deadline," she said.

As the JLLR's primary fundraiser, Holiday House, which opens its doors to more than 150 merchants from more than 17 states Thursday, Nov. 12, through Saturday, Nov. 14, raises funds for vital community projects, including Stuff the Bus, GROW, Buckle Up & Be Safe, Kota Kamp, Nightingales at Arkansas Children's Hospital, and many more.

As a mother to two young daughters, Adley, 7, and Adison, 2, raising funds for these projects is important to Barham on a personal level. "I want to be supportive of these important causes that enrich the lives of women and children in central Arkansas. I want my two girls to see the importance of utilizing their talents and abilities to help those around them and their communities. The joy you receive from knowing you are providing car seats to needy children, or school supplies to a family in need, or the resources to help teen girls realize how wonderful they are inside and out is the best feeling you can have at the end of a long, hectic week," she said. "I am blessed to have a supportive husband who allows me to spend a great deal of time and energy trying to raise money for such a worthy cause."

(continued on pg. 20)

BARHAM SAYS SHE HAS ALWAYS BEEN AN ANIMAL LOVER, AND THAT PASSION LED HER TO JOIN FUTURE FARMERS OF AMERICA AND 4-H, WHERE SHE RAISED ANIMALS FOR STOCK SHOWS.

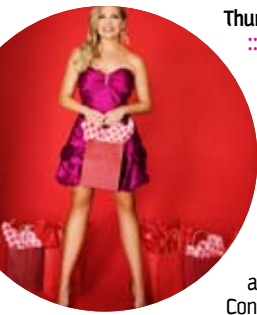
DURING COLLEGE SHE BECAME A MEMBER OF THE NATIONAL CHAMPION MEAT JUDGING TEAM.

"I LOVED DOING IT AND MADE SOME OF MY BEST FRIENDS BY GOING TO STOCK SHOWS..."

left : AMBER BARHAM wearing an Adrienne Pappell taffeta dress with BCBG metallic heels from Dillard's Park Plaza and Alexis Bittar jewelry from Barbara/Jean Ltd. hair and makeup : CASSIE FRANCONI photography : JASON MASTERS

holiday house

Wed., Nov. 11 • 6-10 p.m.
PREVIEW PARTY – Silent Night, Not Tonight: Evening includes entertainment by CRISIS!, a silent auction, Jones & Son Diamond & Bridal Fine Jewelry raffle, and shopping, Statehouse Convention Center. Tickets: \$35 per person includes hors d'oeuvres from Palette Catering, beer and wine.



Thurs., Nov. 12 • 9 a.m.-noon
PRIVATE SHOPPING – A Very Merry Morning: Crowd-free shopping at the Statehouse Convention Center. Tickets: \$25 per person includes brunch from Palette Catering and coffee from The Peabody Little Rock.

Thurs., Nov. 12 • 6-9 p.m. **LADIES NIGHT OUT – Stockings and Stilettoes:** Shopping, a silent auction, and a wine cork pull, Statehouse Convention Center. Tickets: \$25 per person includes Mexican buffet by Moe's Southwest Grill and two drinks. For more info on JLLR or Holiday House, contact Amber Barham at (806) 535-0909, amber@barhamranch.com, or visit Jllr.org.

GENERAL SHOPPING ::
 Thurs., Nov. 12 → Noon-9 p.m. • Fri., Nov. 13 → 9 a.m.-9 p.m.
 Sat., Nov. 14 → 9 a.m.-6 p.m. (see pg. 68 for more details)

“I NEVER KNEW A GROUP OF LADIES COULD BE SO POWERFUL”

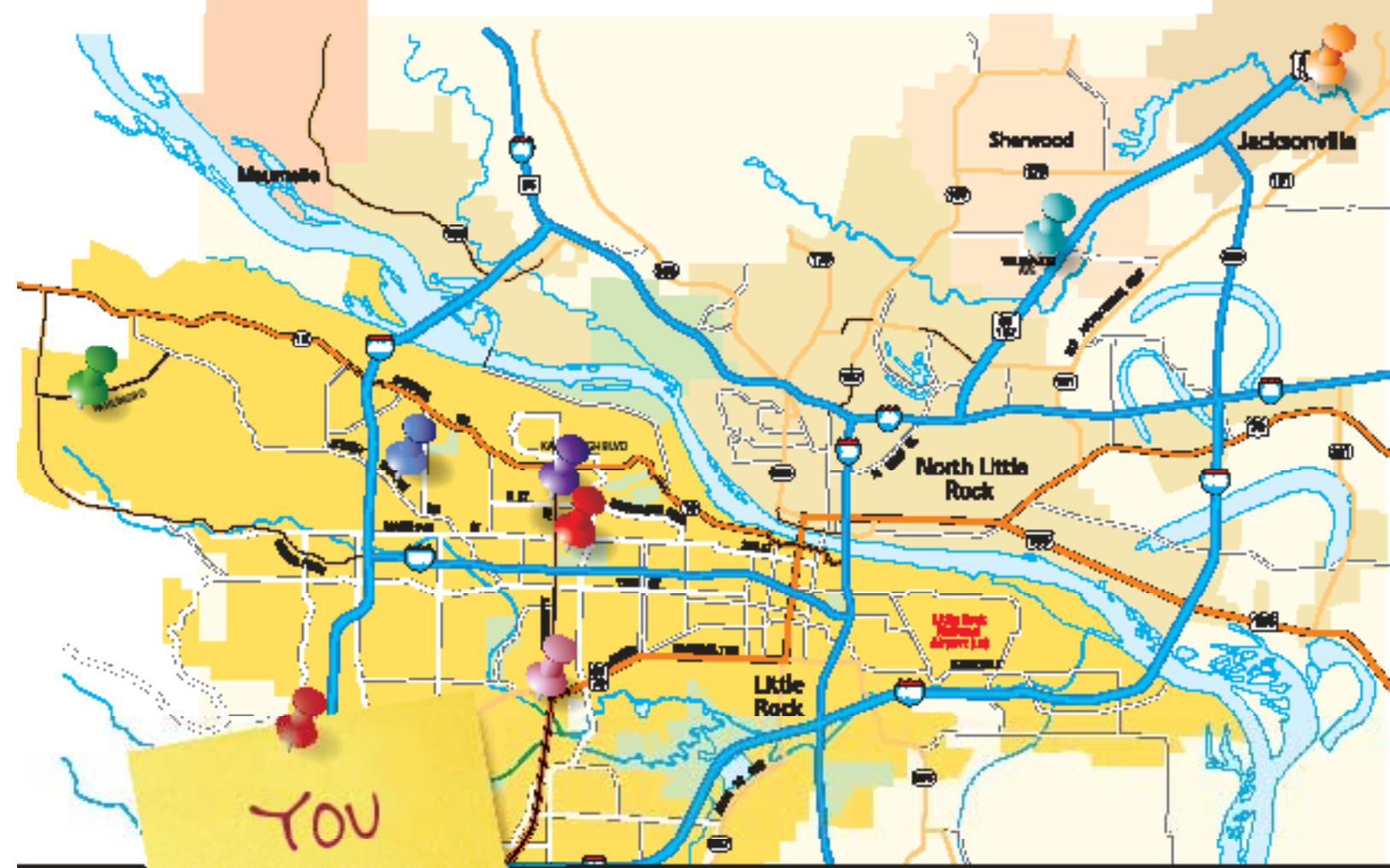
Future Farmers of America and 4-H, where she raised animals for stock shows. “I loved doing it and made some of my best friends by going to stock shows,” she said. During college she became a member of the National Champion Meat Judging Team. “That is a whole other topic,” she said. She graduated from Texas Tech University with a Bachelor of Science in Animal Science and a Master of Science in Education, and she’s certified to teach K-12th grades.

These days Barham doesn’t do a whole lot of meat judging, but in addition to her JLLR duties, she teaches aerobics, both of her daughter’s gymnastics classes, and Gymboree classes. “I also co-lead Adley’s daisy scout troop and coached her cheer squad the last two years,” she said. “I have been involved in the Maumelle Mommy and Me organization since 2004 and have been the president for the past four years.”

Barham says that she first joined the JLLR to meet new people. As a newcomer to Little Rock with her family hundreds of miles away, she thought it would be a way for her to connect with other women who, like herself, wanted to better their communities. And she was right. “I have learned more about Little Rock and Arkansas than I would have on my own, and I have met the most fabulous women,” she said. “I love knowing that this group of women is so strong and works tirelessly to help the women and children in our community. I never knew a group of ladies could be so powerful together and get so much accomplished.” *

Barham’s husband is Brett Barham, assistant professor of breeding and genetics at the University of Arkansas Extension Service, whom she met during college at Texas Tech University while studying to become an agriculture teacher.

Surprised? Don’t be. Barham says she has always been an animal lover, and that passion led her to join



WE ARE, TOO.

St. Vincent has a network of primary-care clinics located throughout central Arkansas. So no matter where you live or work, there’s a St. Vincent clinic nearby, fully staffed, and ready to care for you and your family.

St. Vincent Family Clinic/Chenal
 1811 Rahling Road, Suite 128
 Little Rock
 552-8150

St. Vincent Family Clinic/Jacksonville
 1110 W. Main St.
 Jacksonville
 982-2108

Little Rock Internal Medicine Clinic
 1100 N. University Ave., Suite 1
 Little Rock
 664-2500

St. Vincent Family Clinic/Rodney Parham
 10555 N. Rodney Parham Road
 Little Rock
 221-8888

Wildwood Medical Clinic
 2215 Wildwood Ave., Suite 210
 Sherwood
 552-7262

CATHOLIC HEALTH INITIATIVES

St. Vincent Family Clinic/University
 4282 S. University Ave.
 Little Rock
 562-4838

The Longevity Center at St. Vincent
 St. Vincent Infirmary
 Medical Center Campus
 Parkview Building, Suite 210
 One St. Vincent Circle
 Little Rock
 552-4777

St. Vincent
 Inspired.

StVincentHealth.com/Clinics

EVOLENCE®
 a naturally younger-looking you

Are you ready to look as young as you feel?

The first and only collagen dermal filler proven to last through 12 months

- o Immediately smoothes the appearance of the lines from your nose to your mouth
- o Replaces collagen you’ve lost, with collagen that lasts through 12 months
- o Minimal to no down time, so you can enjoy your refreshed appearance the same day

Visit www.evotence.com

Learn how to save up to \$150 to look as young as you feel.*
 Find a STAR™ trained healthcare professional in your area.

EVOLENCE® is indicated for the correction of moderate-to-deep facial wrinkles and folds, such as nasolabial folds. EVOLENCE® should be injected into the mid-to-deep dermis. Possible side effects of EVOLENCE® are usually injection-site related and include mild swelling, redness, and pain. Other rare side effects include the development of small areas of firmness under the skin at the treated sites that may be noticed when the areas are pinched upon. For more information, please call 1.800.EVOLENCE (1.800.386.5353).

*\$50 rebate by mail for each syringe used for your EVOLENCE® treatment performed between January 1, 2009 and December 31, 2009 (up to three 1 mL syringes) with qualifying rebate request form. Requests must be post-marked within 60 days of treatment. Limit 10 rebate submissions per patient, per year. Not combinable with other offers. Must be 18 or older. Full terms and conditions for rebate on www.evotence.com.

©ORTHO DERMATOLOGICS™, division of Ortho-McNeil-Janssen Pharmaceuticals, Inc. 2009